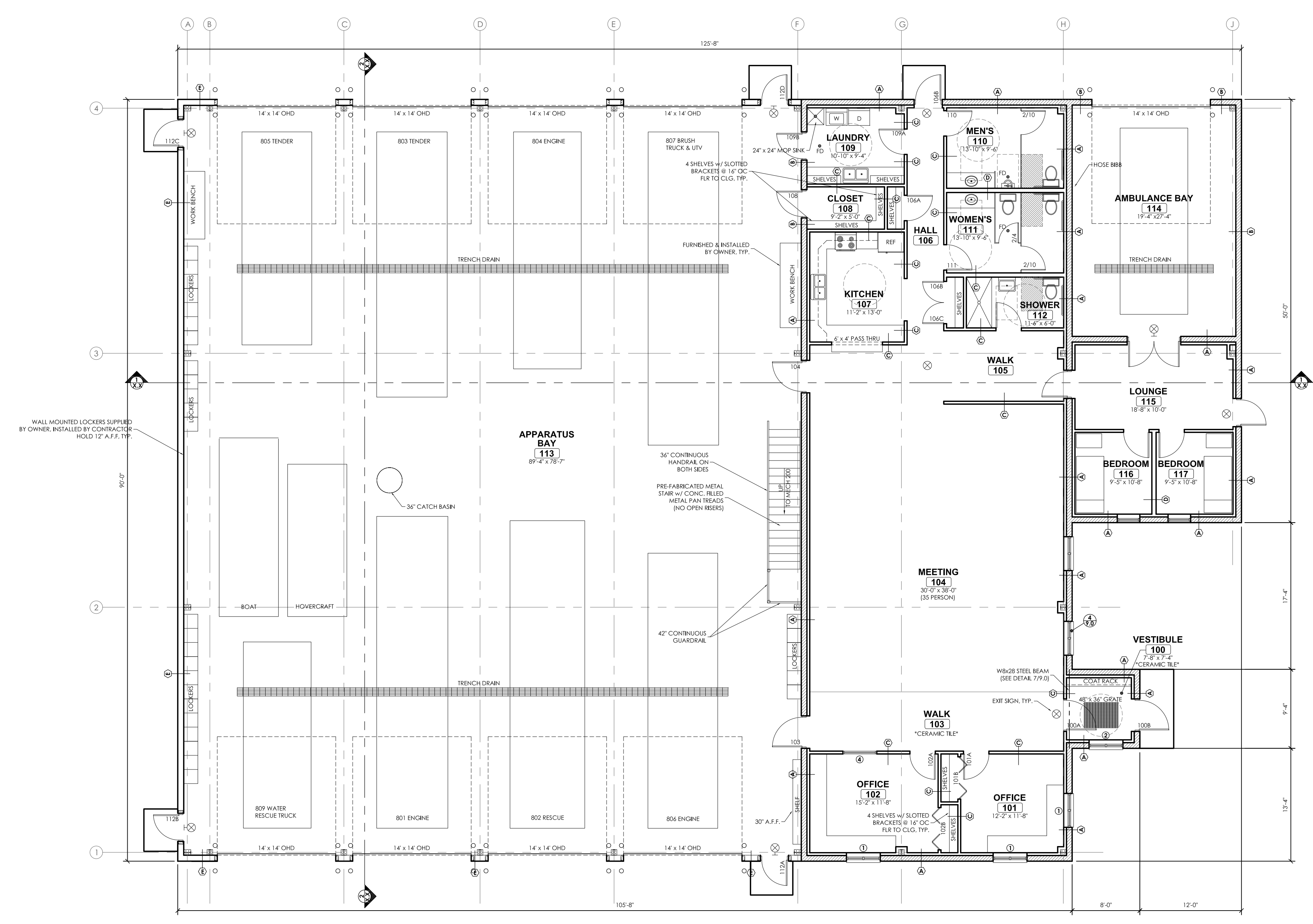




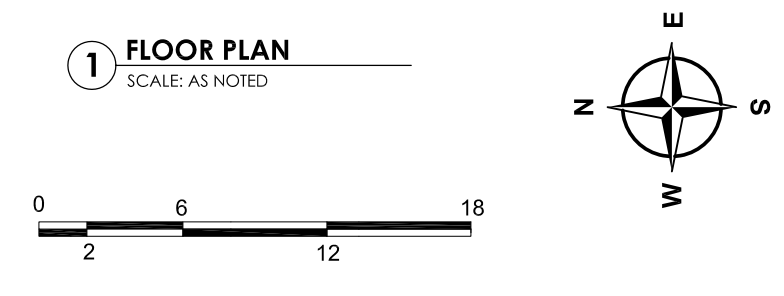
General Engineering Company
 P.O. Box 340 • 916 Silver Lake Dr. • Portage, WI 53901
 608-742-2169 (Office) • 608-742-2592 (Fax)
 www.generalengineering.net

This document is the property of General Engineering Company. No part of this document may be reproduced, stored in a retrieval system, or transmitted in any form or by any means, electronic, mechanical, photocopying, recording, or by any information storage and retrieval system, without the prior written permission of General Engineering Company. Neither this document nor the information herein is to be reproduced, distributed, used or disclosed, either in whole or in part except as specifically authorized by General Engineering Company.

FLOOR PLAN
NEW FIRE STATION AND EMS FACILITY
PRINCETON FIRE DISTRICT
COUNTY HIGHWAY J
TOWNS OF PRINCETON, MECAN, AND ST. MARIE
GREEN LAKE COUNTY, WI



WALL MOUNTED LOCKERS SUPPLIED BY OWNER, INSTALLED BY CONTRACTOR HOLD 12" A.F.F. TYP.



REVISIONS	NO.	BY	DATE

SCALE

DRAWN BY: RDH
 REVIEWED BY: KEF
 ISSUE DATE: 11/04/15
 GEC FILE NO.: 2-1214-305
 SHEET NO.:

A1.0