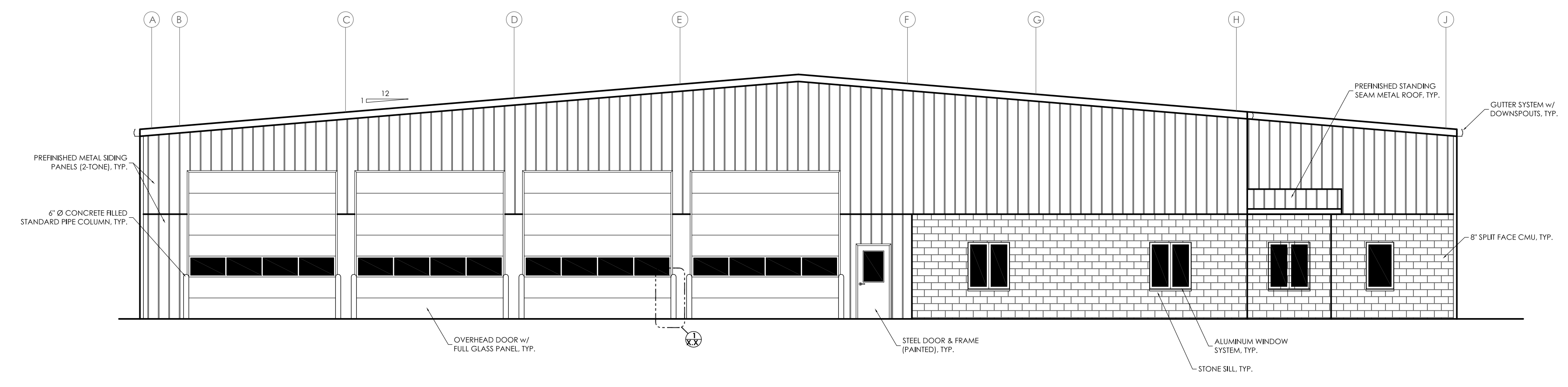


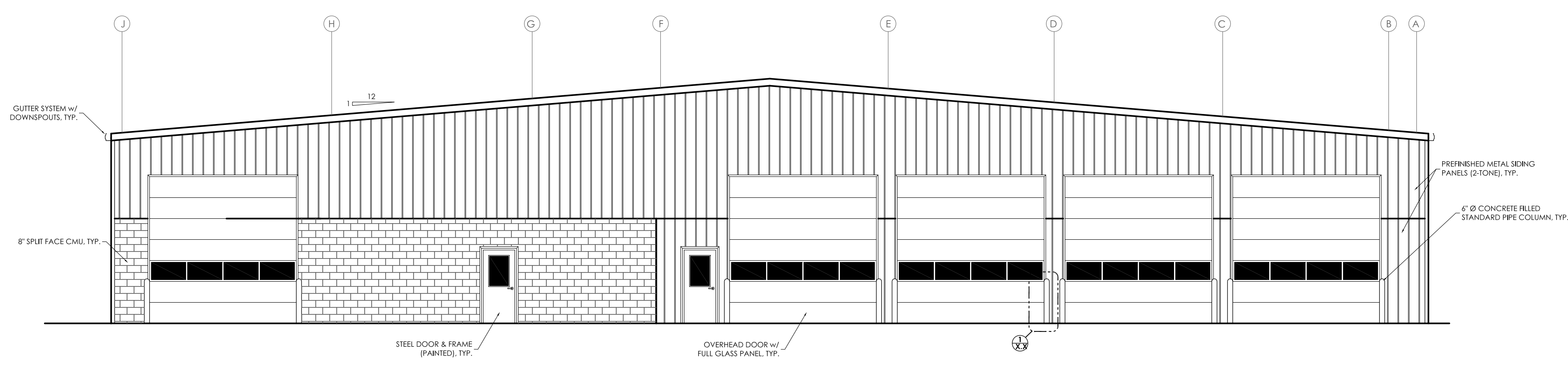


General Engineering Company
 P.O. Box 340 • 916 Silver Lake Dr. • Portage, WI 53901
 608-742-2169 (Office) • 608-742-2592 (Fax)
 www.generalengineering.net
 This document is the property of General Engineering Company. No part of this document may be reproduced, stored in a retrieval system, or transmitted in any form or by any means, electronic, mechanical, photocopying, recording, or by any information storage and retrieval system, without the prior written permission of General Engineering Company.

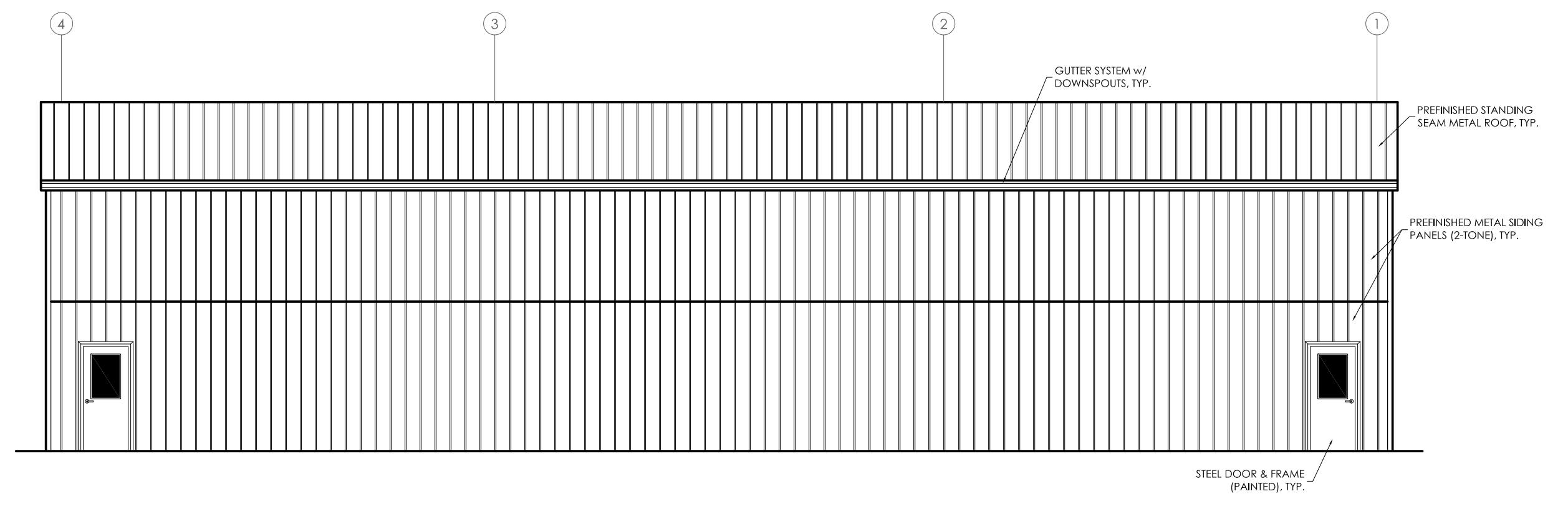
EXTERIOR ELEVATIONS
PRINCETON FIRE DISTRICT
NEW FIRE STATION AND EMS FACILITY
COUNTY HIGHWAY J
TOWNS OF PRINCETON, MECAN, AND ST. MARIE
GREEN LAKE COUNTY, WI



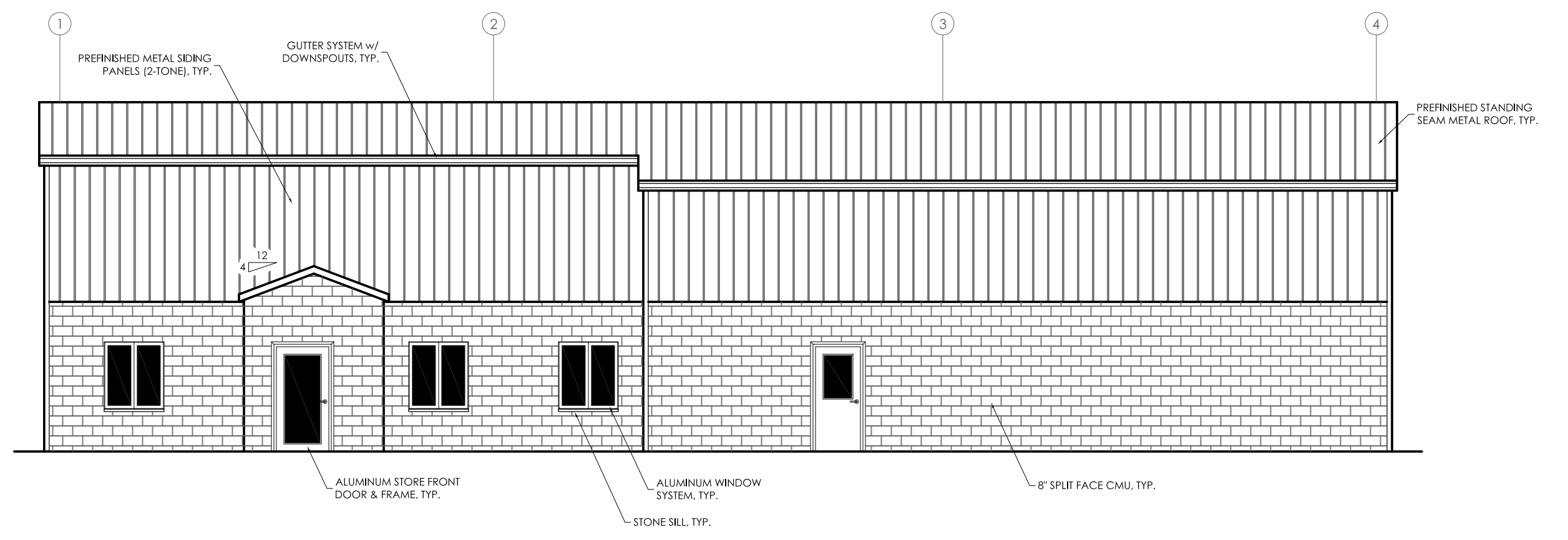
1 WEST ELEVATION
 SCALE: AS NOTED
 0 6 12 18
 2 12 18



2 EAST ELEVATION
 SCALE: AS NOTED
 0 6 12 18
 2 12 18



3 NORTH ELEVATION
 SCALE: AS NOTED
 0 6 12 18
 2 12 18



4 SOUTH ELEVATION
 SCALE: AS NOTED
 0 6 12 18
 2 12 18

DATE	
BY	
NO.	
REVISIONS	

SCALE

DRAWN BY RDH
 REVIEWED BY KEF
 ISSUE DATE 11/04/15
 GEC FILE NO. 2-1214-305
 SHEET NO.

A2.0